

# Plano, TX Data Center

2800 Summit Avenue  
Plano, TX 75074  
+1.833.425.4463

## Overview

The Dallas market has emerged as a focus of significant investment by leading players, both in the business community as well as the data center industry. In fact, Dallas is the third-largest U.S. data center market, due in large part to its sales tax exemption incentives and low power costs. As the only state in the U.S. with a self-contained power grid, costs per kW are significantly less than national averages.

# 19



**BUILDING ACRES**

# 375,000



**SQUARE FEET**

# 60



**MEGAWATTS**

## Building Specifications

- Renovated in 2015
- Campus is 19 acres
- 375,000 sq. ft. at full build
- 280,000 sq. ft. data hall at full build
- Private, dedicated data center suites
- Concrete slab-on-grade and structured steel
- ASCE 7 occupancy category IV. Data hall FM-120 and office FM-90 roof lift ratings
- Wind importance factor of 1.15
- Single bay with delivery platform and equipment trap
- Dedicated office space for rent
- Shared conference rooms and drop-in office pods
- 24x7x365 accessibility
- Industry-leading 1.15 PUE
- Uptime Institute Tier III certified



## Building Specifications

### NETWORK

- Two diverse points of entry, per build
- Carrier-neutral
  - CenturyLink, Cogent, Crown Castle, FiberLight, SummitIG, Verizon, and Zayo
- Two diverse meet-me rooms
- Less than one mile from 21715 Filigree Court Carrier Hotel

### POWER

- Diverse and dedicated substations, expandable to 60 MW
- Concurrently maintainable UPS
- N+1 power generation
- Redundant A+B distribution
- Revenue-grade metering
- Up to 50 kW per rack

### SECURITY

- 8' Impasse steel security fencing with laser intrusion detection
- Five-layer security design; motorized gates
- Card reader access
- 24x7x365 on-site security guards
- Multiple checkpoints: mantraps, dual authentication (biometrics and RFID badge readers)
- Event-driven IP video surveillance and visual light-based alerts

### CORPORATE SUSTAINABILITY

- Uses up to 85% less water
- Uses up to 80% less power
- 100% renewable energy available
- Industry-leading PUE, WUE, and CUE

### FIRE PROTECTION

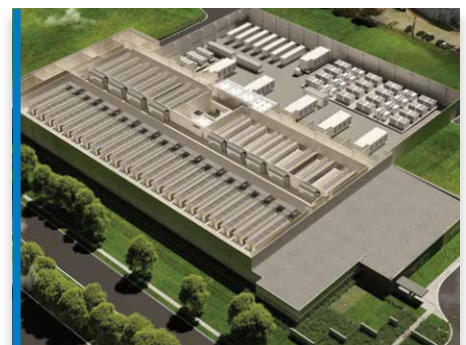
- Separately zoned data halls
- Very Early Smoke Detection Apparatus (VESDA)
- Dual interlock pre-action

### COOLING

- Our hot aisle containment strategy absorbs heat at its source - supporting standard and high power densities and allowing you to scale vertically and horizontally - without stranding capacity
- Configurable to client needs (i.e., N, N+1, 2N)

### COMPLIANCE

- System and Organization Control (SOC) 2 Type 2 and SOC 1 Type 2, PCI DSS, HIPAA, HITECH, NIST 800-53, and ISO 27001:2013



### ABOUT ALIGNED ENERGY

Aligned Energy is an infrastructure technology company that offers adaptable colocation and build-to-scale solutions to cloud, enterprise, and managed service providers. Our intelligent infrastructure allows densification and vertical growth within the same footprint, enabling customers to scale up without disruption, all while maintaining industry-leading Power Usage Effectiveness (PUE). By reducing the energy, water and space needed to operate, our data center solutions, combined with our patented cooling technology, offer businesses a competitive advantage by improving reliability and their bottom line. For more information, [visit www.alignedenergy.com](http://www.alignedenergy.com) and [connect with us on Twitter, LinkedIn and Facebook.](#)

